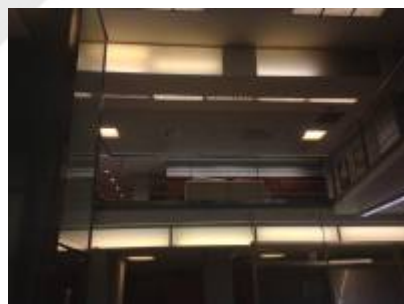
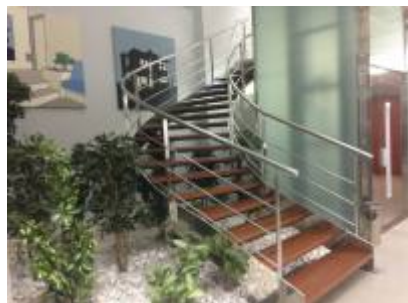
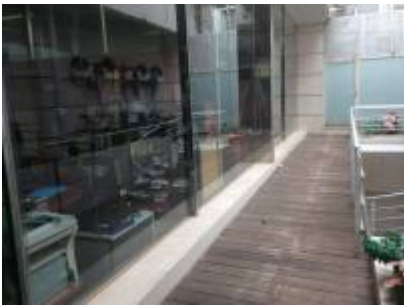
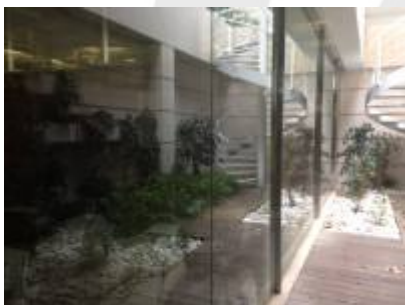


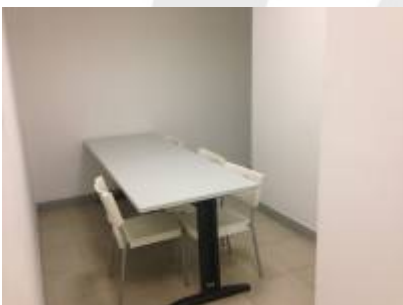
## Downtown commercial space on 3 levels











## INFORMATION

Ref: 269

Location: Eixample Dret (Barcelona city)

**Precio: consultar/ask**

## DESCRIPTION

---

Commercial property in central zone. 1.500m<sup>2</sup> on three floors + basement.

Basement of 300m<sup>2</sup> with kitchen, dining area and toilets. Parking for rent in the same building.

Local currently intended for study/office.

Property with many possibilities. Suitable for its central location to consulate School (languages,), shopping center, restaurant, galleries,

It has multiple rooms, elevator, indoor gardens.

With top quality finishes.

Very bright with natural light.